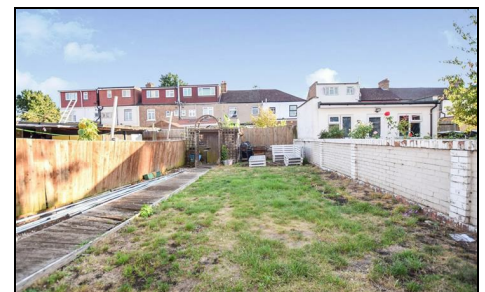
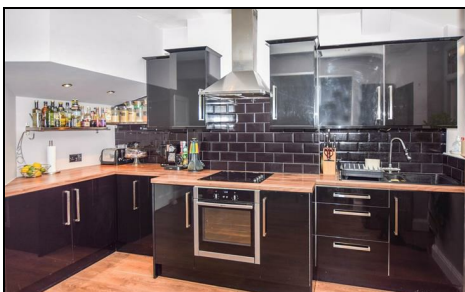


**Gorringe Park Avenue
Mitcham, CR4 2DL**

£575,000 Freehold



A well presented three bedroom, two reception family home located on the borders of Tooting the property is only a short distance to Tooting Overground & Tube Stations. The property offers a generous open plan living/kitchen/dining space, separate front reception, utility room and gardens to both the front and south facing rear. Upstairs offers two double bedrooms, a further small double bedroom and large family bathroom with separate shower and the potential to extend into the loft subject to the usual planning permissions.

Gorrington Park Avenue, CR4

Approximate Gross Internal Area
 Ground Floor = 59.0 sq m / 635 sq ft
 First Floor = 41.0 sq m / 441 sq ft
 Total = 100.0 sq m / 1076 sq ft



Ground Floor

First Floor

This floor plan is for representation purposes only and is not drawn to scale. Whilst every attempt has been made to ensure its accuracy measurements are approximate only and should be checked before making any decisions reliant upon them.
 Copyright Bespokeplans.co.uk 2020 (ID674821)

- No Onward Chain
- Three Bedrooms
- Rear Extension
- Open Plan Kitchen Diner
- Sought After Location
- South Facing
- Close To Transport Links
- Potential To Extend (STPP)
- Video Tour Available



Energy Efficiency Rating		Environmental Impact (CO ₂) Rating	
Very energy efficient - lower running costs	Current	Potential	Very environmentally friendly - lower CO ₂ emissions
(92 plus) A		88	(82 plus) A
(81-91) B			(81-91) B
(69-80) C	69		(69-80) C
(55-68) D			(55-68) D
(38-54) E			(38-54) E
(21-38) F			(21-38) F
(1-20) G			(1-20) G
Not energy efficient - higher running costs			Not environmentally friendly - higher CO ₂ emissions
England & Wales	EU Directive 2002/91/EC		England & Wales
			EU Directive 2002/91/EC

For Free Mortgage Quote and Best Mortgage Rates, call an Ellisons Mortgage Advisor on 020 8544 0518



Although these particulars are believed to be correct, their accuracy is not guaranteed and they do not form part of any contract.

Celebrating 30 years of successful Sales and Lettings in Merton

